

Contaminant Quantification for Suspect and Non-Target Screening

Challenge

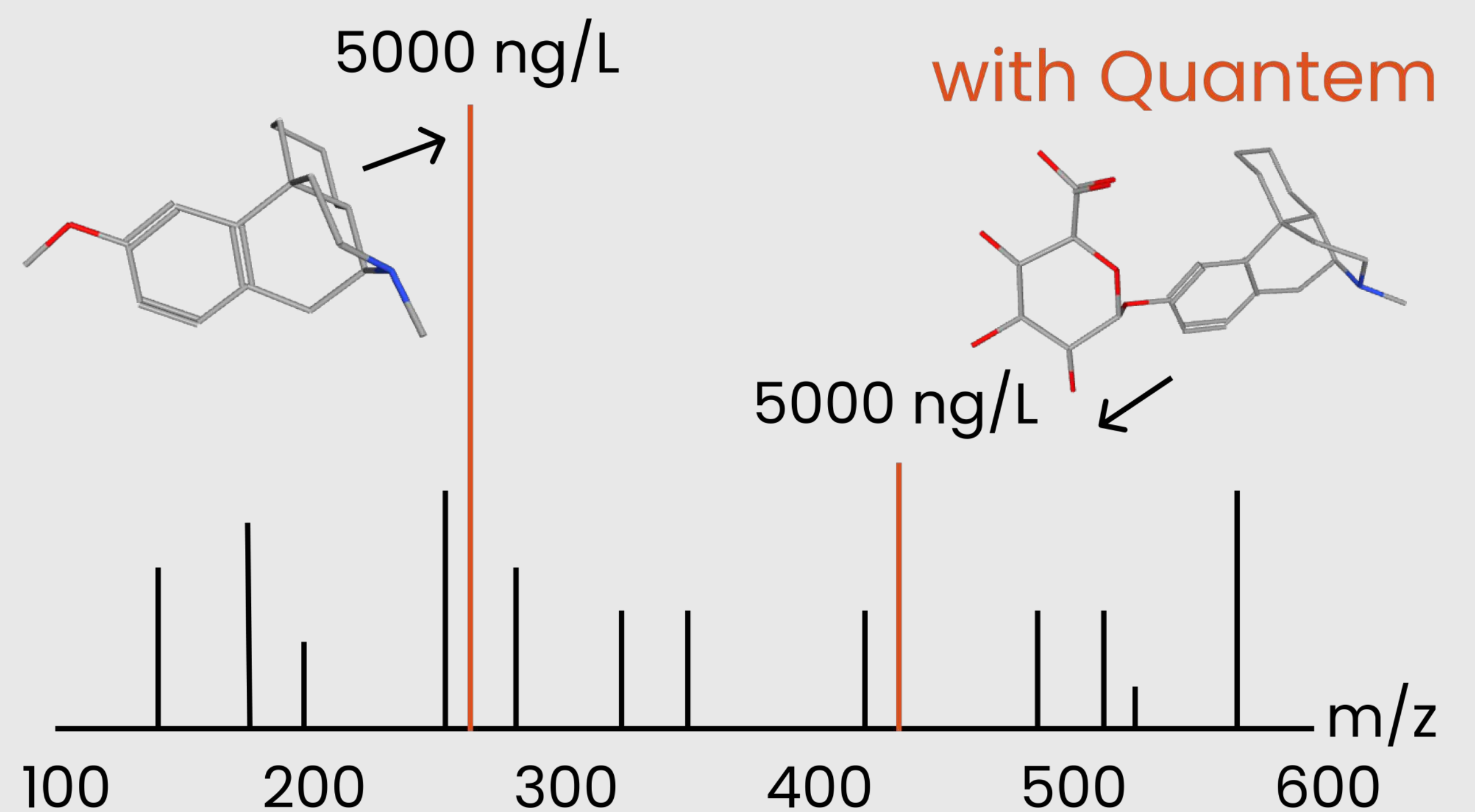
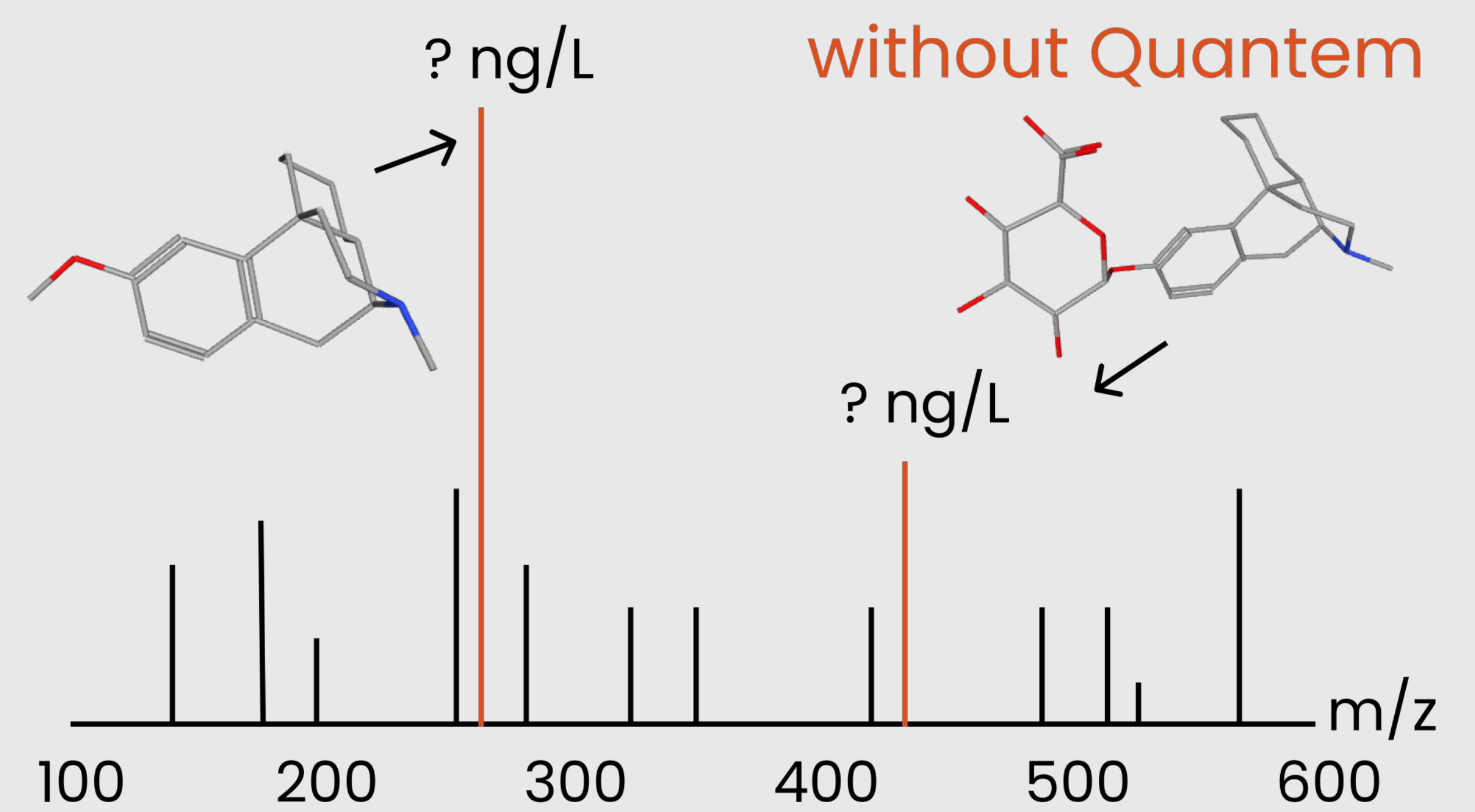
When analyzing your samples for toxicological safety, you can detect peaks and identify compounds holistically. However, estimating the concentration from MS signals of close-eluting / similar compounds or using single point calibration can result in errors as large as tens of millions of times, making it challenging to assess the actual risk accurately.

Solution

Before investing in standards and embarking on time-consuming method development, turn to Quantem. Our software utilizes a robust model to swiftly estimate concentrations with an average error of 3 times. This level of accuracy provides sufficient certainty to promptly determine whether exact quantification is necessary or if Quantem's estimation indicates the concentration is too low to pose a risk.

References

- [Sewage sludge in Denmark](#)
- [Sewage water and river water](#)
- [River water in Denmark](#)
- [Ground water in Switzerland](#)
- [PFAS in dolphins](#)
- [Scientific background](#)



Pricing

Our pricing is based on number of estimations.

Number of estimations	Invoice
1,000	€2,300
3,500	€6,860
5,000	€8,250
10,000	€11,000

Over 3 Million estimations made by our partners:

